

RunwayNews

Edition Six | July 2007

Welcome

Welcome to an information-packed sixth edition of Runway News, London City Airport's community newsletter. In this edition, you will see our usual updates on what's happening in and around the Airport, along with a special "Master Plan Update".

It's hard to believe that it was over a year ago that the Airport first presented its Master Plan in the February 2006 edition of Runway News. Inside this edition, you will see the first stage of making this plan a reality. In order to make best use of the current facilities at London City, the Airport is making an application in the next two months to the London Borough of Newham to operate more flights without building more infrastructure. We have outlined the application in this newsletter, along with some questions and answers that may be useful.

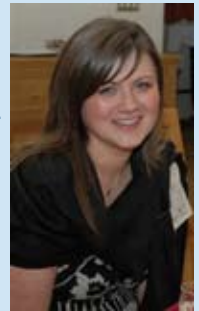
This month, London City Airport launched the 2007 University Prize Scheme, which offers £2000 per

year for three years to two Newham students who plan to study for a degree from September. Further details of the programme can be found on page four and application packs are available from all further education providers in the borough.

We hope to see you all on Saturday 7 July 2007 at the 11th London City Airport Fun Day in aid of Richard House Hospice. The fun starts at 2pm and entry is free, so come along to see the attractions, take part in the competitions and witness the only air show in London. I look forward to seeing you there.

Should you have any questions or comments, please contact me on 020 7646 0042, email me at elizabeth@lcy.co.uk, or Victoria on 020 7646 0025, victoria.jeeves@lcy.co.uk.

Elizabeth Hegarty
– Community Relations Manager



Airport Update

Barnaby Bear Returns to London City Airport

Barnaby Bear, who appears in the Geography Curriculum for Years One and Two has been a regular user of London City Airport in recent months. So far this year, Barnaby has shared his travel experiences with pupils from Rosetta and St Luke's Primary Schools.

Barnaby and London City Airport volunteers have been busy teaching local school children about London as a tourist attraction. Following a classroom based session, children greet Barnaby when he flies home from his London trip to Manchester, from London City Airport. Barnaby is currently looking forward to July when students from Drew and Scott Wilkie Primary Schools are due to pay him a visit.



It's a thumbs up from Barnaby!

Master Plan Update

Over the last twenty years London City Airport has grown gradually in a sustainable way. The Airport has become an increasingly important component of the local economy, with 2.4 million passengers traveling through the Airport last year.

London City Airport is submitting a planning application this summer to accommodate our forecast growth up to 2010.

We are not applying for permission to build any new buildings or a new runway, but we do want to increase to 120,000 flight movements per year – last year we handled approximately 81,000 movements. The application will allow us to accommodate the year-on-year growth of the Airport and helps deliver the Government's 2003 White Paper, "The Future of Air Transport", which places a duty on all UK airports to make best use of existing capacity.

The Airport currently supports well over 1,500 local jobs, a figure that could rise to 2,300 in 2010 if this application is approved. Our commitment to the community and our sustainability agenda through programmes and events, ensures that local people see the benefits of living near an airport. The growth of London City Airport has encouraged businesses, investors, and developers to locate in

East London, bringing new services and facilities to the area. A vital part of our success has been the support we receive from our neighbours. It is with this continued support that we are in a position today to develop the business further.

As outlined in the February 2006 issue of Runway News, we also expect to submit our Master Plan for planning approval next year, which if approved, will enable the Airport to deliver its projected growth beyond 2010. This will be preceded by a further consultation process, in which we will be outlining that application to community groups, residents, businesses and local, regional & national authorities.



Some of your questions answered...

Q. Will the increase in permitted movements mean more flights straight away?

A. Yes, but the increase will be gradual over the next three years.

Q. Will the Airport be noisier?

A. Yes. The Airport will become busier over the coming three years and therefore a little noisier than at present. Newer aircraft types are becoming quieter as they are more technologically advanced. We have a programme in place to insulate properties affected by noise, which is triggered at a lower decibel level than at any other airport in the UK, including Heathrow and Gatwick. We will continue our commitment to sound insulation of local homes at this low trigger level and monitor noise closely, reporting regularly to the Airport Consultative Committee (www.lcacc.org).

Q. Will the Airport be open for longer hours?

A. No. The application features no change to the operating hours of the Airport. There are no plans to introduce night flights at London City Airport.

Q. Will larger aircraft (than operate today), operate in 2010?

A. No. Given the physical constraints at the Airport, it is not possible to substantially increase the size of aircraft. Many of the aircraft types flying from London City Airport at present are no longer produced. It is therefore likely that new, more environmentally friendly aircraft types, like the Embraer 170, will operate from here in the future, instead of older aircraft like the BAe 146.



Q. Will holiday destinations be available from the Airport?

A. Decisions to fly new routes are made by the airlines that choose to operate at London City Airport. The success of the Airport in recent years has attracted increased commitment from national carriers, such as British Airways and Air France, who are now operating routes to destinations such as Nice, Madrid and Milan, along with the traditional favourites such as Edinburgh, Dublin and Jersey. Fares on these routes, particularly at off-peak times are competitively priced and available at LondonCityAirport.com.

Q. What is the Airport going to do about Air Quality as it grows?

A. Air quality is affected by emissions from activities such as transport, manufacturing and power generation. Road traffic is currently the largest single contributor in London and this fact is recognised by the London Borough of Newham, who have designated the major trunk roads in Newham as Air Quality Management Areas (AQMAs).

Government guidance indicates that airports should begin to monitor local air quality when they reach 5 million passengers per annum. Although London City Airport currently only carries half this amount, and the London Borough of Newham does not consider the airport as an AQMA, the Airport has already committed itself to monitoring the effect of the future growth of the Airport on local air quality through the installation of state-of-the-art air quality monitoring equipment at the end of 2006. As the results of this become available, they will be analysed and shared with the Local Authority.

Q. What about the issue of climate change?

A. Climate change is an issue that we take very seriously. Although it is anticipated that airlines will be brought into the European Union Emissions Trading Scheme (EU ETS) in 2011, all airports are already regulated for emissions of greenhouse gases under the UK participation in the EU ETS. Unlike many other UK airports, the current emissions from London City Airport are too small to reach the threshold for active participation within the scheme, however, we remain committed to the principles of sustainable development. The introduction of the Docklands Light Railway to London City Airport has allowed over 50% of our passengers to use public transport and has removed over 116,000 annual shuttle bus journeys from local roads. In addition, the Airport operates a fleet of electric vehicles airside and has strict operating procedures for aircraft on the ground; reducing their emissions through the use of fixed electrical ground power and restricted engine running. Furthermore, our "reduce, reuse, recycle" campaign has decreased the amount of Airport waste going directly to landfill. Alongside these existing programmes, the Airport will continue to seek to introduce new initiatives to reduce greenhouse gas emissions from the Airport.



Q. How many jobs will these additional flights create?

A. Currently, over 1,500 people are employed onsite at London City Airport. With permission to operate 120,000 flights, we estimate that around 2,300 people will be working onsite by 2010, with a further 600 jobs created indirectly as a result of the Airport's activity in East London (i.e. taxi companies, hotels etc). London City Airport has a commitment to recruiting local people, with over 70% of all employees in 2006 living within a 5 mile radius of the Airport.

Q. What does the Airport do for us?

A. As well as providing excellent employment prospects, London City Airport has an extensive community relations programme, with staff working full time to ensure that local residents gain from living nearby the Airport. Our programmes focus on education, local employment, the environment and health & fitness, and are outlined both on our website (LondonCityAirport.com) and in this community newsletter, *Runway News*. The Airport believes that an open, honest relationship is the best way to operate and works hard to ensure it is a good neighbour and active member of the community.

CONTACTS

If you have any comments or questions about the development of London City Airport, please contact Elizabeth Hegarty, Community Relations Manager on 020 7646 0042, or email masterplan@londoncityairport.com.

Don't Forget!

The London City Airport Fun Day is taking place on **SATURDAY 7 JULY 2007**

This year, the spectacular assortment of activities includes:

London's Only Air Show
X-Treme Motorcycles Stunt Display Team
Aerial Circus
Roller Rink
Human Table Football
Birds of Prey Display
Afternoon Tea Dance

Doors open at 2pm and entry is free.

A diverse range of foods from hamburgers to authentic Caribbean cuisine will be on sale. All proceeds from the day will be donated to the Airport's chosen charity, Richard House Hospice.



Competition Corner

WIN FOUR FREE RETURN TICKETS TO GENEVA, FLYING FROM LONDON CITY AIRPORT

To enter, all you need to do is answer the question below. Complete your details and post this form to Rohima Begum, London City Airport, City Aviation House, Royal Docks, London, E16 2PB, or, hand your completed form in at the Information Desk in the Airport Terminal.

Which cuddly bear teaches children about geography at London City Airport?

- Baloo
- Barnaby Bear
- Rupert the Bear
- Paddington Bear

Name:

Address:

Contact daytime phone number:

Question answer:

Competition is not open to employees at London City Airport. Competition closes 31 July 2007. Winners will be notified by telephone. Flights must be taken by 1 December 2007.

London City Airport 2007 University Prize Scheme

- Are you a Newham student in further education?
- Have you applied to attend university this September?

London City Airport is launching a University Prize Scheme for Newham students in 2007.

Successful applicants will be provided with £2000 per year for three years whilst studying at university, with added benefits of work placements, a business mentor and additional training at the Airport.

Application forms have been distributed to all further education providers in Newham. For more information, please contact your tutor or careers advisor.

Airport Contacts

London City Airport
Royal Docks
London City Airport E16 2PB

Community Relations
Elizabeth Hegarty
Phone: 0207 646 0042
Email: elizabeth@lcy.co.uk

Victoria Jeeves
Phone: 0207 646 0025
Email: victoria.jeeves@lcy.co.uk

Environment and Planning
Rob Grafton
Phone: 0207 646 0200
Email: rob@lcy.co.uk

Long Term Strategy
Janet Goulton
Phone: 0207 646 0530
Email: janet@lcy.co.uk

Recruitment
Reed Employment
Phone: 0207 517 3594