

# RunwayNews

Edition Nine | June 2008

## Welcome

The words on everyone's lips at London City Airport are "Fun Day". I hope you have told your friends and family to save the date (5th July), as I can assure you that this year will be bigger and better than ever before. We have been lucky to have engaged a brilliant fundraiser this year to ensure that the event presents the best FREE community entertainment, as well as raising money for our chosen charity, Richard House Hospice. For further information visit [www.funday2008.com](http://www.funday2008.com).

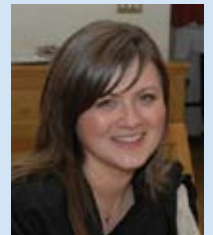
The Annual London City Airport Art Awards Ceremony took place on Wednesday 21 May, with Rhoda Webb from Forest Gate scooping the 1st prize of £500. The Annual Art Awards is now in its 11th year and is supported by the London Borough of Newham.

Finally, I am sad to tell you that Victoria Jeeves (Community Relations Executive) has left the airport to travel and then train as a teacher.

Rohima Begum was successful in her application to the post of Community Relations Executive from Coordinator. Rohima has been working at the Airport since joining in October 2006 through the East London Business Alliance Community Affairs Trainee Scheme. A Tower Hamlets resident, she brings with her a wealth of local knowledge which is applied to the Community Programme.

Should you have any questions or comments on this newsletter or the airport in general, please contact me on 020 7646 0042 or email me at [elizabeth@lcy.co.uk](mailto:elizabeth@lcy.co.uk), or Rohima on 020 7646 0041 or [rohima.begum@lcy.co.uk](mailto:rohima.begum@lcy.co.uk).

Elizabeth Hegarty  
Community Relations Manager



## AirportUpdate

### London City Airport Tops Out New Aircraft Stands

To mark the completion of four new aircraft stands on the eastern apron of London City Airport, executives from the airport topped out the last remaining patch of concrete at a ceremonial event on 17 April 2008.

Construction of the new stands began in June 2007, with London City Airport investing £30 million into their development. The new parking area is a 20,000 square metre concrete platform over the King George V dock to the east of the existing terminal, supported by piles. The stands were designed with environmental concerns at the heart of the development, with almost all construction materials transported to site by barge on the Royal Docks. Constructing the stands on a platform also allows the dock to remain part of London's flood defence.

The stands and passenger pier went into full operation on 23 May 2008, with the entire project delivered on time and on budget.



Charles Buchanan, Richard Gooding and Roy Griffins

# London City Airport Operations

To keep our neighbours up to date with London City Airport operations, we have included below our operating hours, current airlines and destinations for your information.

## Airfield Operating Hours

Monday to Friday 6:30 am to 10:30 pm  
 Saturday 6:30 am to 1:00 pm  
 Sunday 12:30 pm to 10:30 pm  
 Bank Holidays 9:00 am to 10:30 pm

The airport is closed on Christmas Day and there is no move to change these operating hours through our current interim planning application.



As at June 2008

<b>British Airways</b> <b>Cityflyer</b> Amsterdam Barcelona Dublin Edinburgh Frankfurt Glasgow Madrid Nice Warsaw Zürich	<b>CityJet for Air France</b> Belfast City Dublin Dundee Edinburgh Geneva Paris Orly Paris CDG Nice Strasbourg Zürich	<b>VLM</b> Antwerp Amsterdam Brussels Groningen - (via AMS) Isle of Man Jersey Luxembourg Manchester Rotterdam
<b>Air One</b> Milan Linate	<b>Austrian Airlines</b> Vienna	<b>KLM</b> Amsterdam Rotterdam
<b>Lufthansa</b> Berlin Tegel Frankfurt Dusseldorf Hamburg Munich	<b>Luxair</b> Luxembourg  <b>Swiss</b> Basel Geneva Zürich	<b>SAS</b> Copenhagen Stockholm Oslo

## Planning Application Update

The Interim Planning Application to increase the number of flight movements to 120,000 from the current level of 80,000, is expected to be heard by the London Borough of Newham on 18 June 2008.

Should this application be approved, the airport plans to submit a further planning application to deliver the London City Airport Master Plan, which will control the development of the airport for the next 15 - 20 years. LCA expects any future major planning application submitted by the airport to be subject

to wide ranging public debate and consultation to enable interested parties to represent their views.

To view the Master Plan, which was published in 2006 following extensive consultation, please visit [londoncityairport.com/masterplan](http://londoncityairport.com/masterplan).

The 12th annual London City Airport Fun Day will take place on 5 July 2008. With a host of activities and entertainment for visitors, Fun Day 2008 promises to be more exciting than ever before with major attractions including Zippos Circus and live performances throughout the afternoon. With so many fun-filled activities on offer, this year's Fun Day will even stay open an hour later than previous years in order to pack in the fun. We will open at 2.30pm and close at 7.30pm. As always, complimentary buses will be made available and further details will be on the Fun Day web site – [www.funday2008.com](http://www.funday2008.com) and in the Newham Recorder in the coming days.



In aid of



Major sponsor



Media Partner



Associate sponsors



# Community Update

## Woolwich Poly Students Get Fired Up

Through our partnership with Woolwich Polytechnic Secondary School, the Airport has worked with the School to devise a programme to inspire and inform young people, with a focus on jobs and careers. Letting young people know what employers really want from job applicants, on Tuesday 20 May, the Airport Fire Service Manager (Dave Barclay) and Community Relations Manager (Elizabeth Hegarty) delivered an inspirational talk to 15 year ten students, before bringing them to London City Airport for a behind the scenes tour.

In order to give the group an idea of what is expected from our employees, they were set the task to redesign the airport terminal, presenting their ideas to an airport manager later in the week. The students worked together excellently in small teams, coming up with some innovative ideas. The winning team made a model and delivered a presentation, winning WH Smith gift vouchers for their efforts.

## Poplar Paddle by our Port



Ken Dwan with Rohima

In January, the airport was introduced to the Poplar Rowing Club, based on the Thames in Tower Hamlets.

The Club has great facilities for young and mature rowers and has produced rowing stars such as Ken Dwan, pictured above, who has represented Great Britain twice in the Olympics.

On 11 May 2008, the annual Poplar Regatta took place on the Royal Albert Dock, adjacent to London City Airport. Sponsored by LCA, the Poplar Regatta saw 260 crews compete to win trophies and prizes at this prestigious event. Altogether, 60 clubs took part in the Regatta attracting hundreds of spectators. As well as sponsoring the event, LCA presented a trophy to the Most Valued Coach, which was awarded to the coach of London RC.

## New Newham Recruits

On Thursday 17 April 2008, London City Airport hosted over 100 local people applying to work at the airport at their Recruitment Open Day. Candidates looking to work at LCA in either Ground Services or Security were invited to make an appointment to meet with Reed Employment at NewVic College in Stratford. The Airport Community Relations Team also attended, providing local people with information about the jobs on offer to assist them in making their applications.

22 applicants from the day were offered employment, of which 13 were from the London Borough of Newham – 59%! The remaining nine candidates are from London boroughs surrounding the airport. We welcome our new employees, who have all started work with us between 6 May and 2 June 2008.

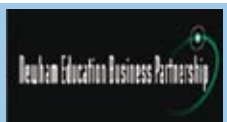
## Premiership Preparation

The Easter Holidays saw airport partner organisation, the Ascension Football Academy, work with Ambassadors in Sport to provide football coaching and competitions for sixty young people from Custom House and the surrounding area. Eager to ensure that local young people are engaged in constructive activities during the school holidays, the airport supported the programme through donation of the Sportsmanship Trophy, which was won by Matthew Clingan, as well as a rucksack of goodies for each young footballer.



Ascension Football Academy

## Who's the BOSS?



London City Airport has a long-standing relationship with the Newham Education Business Partnership (NEBP), through participation in business based programmes in schools and Elizabeth sitting on the Board of the Partnership.

To support the work of the NEBP in the area of employability, the Airport has for many years participated in BOSS Days. BOSS stands for "Building Opportunities Skills Seminars" and the day enables year ten students to focus on jobs, careers and their futures after school.

Since February, Airport volunteers have run workshops on BOSS Days at Brampton Manor, Eastlea and Langdon Schools in Newham, with more scheduled for Rokeby and Kingsford Schools. After a BOSS Day, many students follow up with a mock interview at London City Airport. To find out more about programmes coordinated by NEBP, visit [www.nebp.org.uk](http://www.nebp.org.uk).

# Apply Now!

## 2008 University Prize Scheme Open for Entries



If you are a Newham student applying to join university this September, you could apply for the London City Airport University Prize Scheme. Through the Scheme, the airport awards successful applicants a sum of £2,000 for each year of their university degree, two weeks paid work experience each summer, an airport management mentor and an opportunity to participate in the airport's in-house training courses.

Originally launched in 2007, the University Prize Scheme is open to all students who have lived in Newham for at least three years and have applied to study in the fields of transport, business, geography or foreign languages at university.

Last year's successful students were Dwayne Black and Zohaib Bhutta, both from St Angela's and St Bonaventure's Sixth Form. They join seven students from NewVIc Sixth Form, who are also sponsored by LCA.

Students wanting more information on the programme, should speak to their college or sixth form tutor, or contact Rohima Begum at [Rohima.Begum@londoncityairport.com](mailto:Rohima.Begum@londoncityairport.com).

**The closing date for applications is Friday 27 June 2008.**

## Airport Educational Tours

March – June 2008

Old Palace Primary  
George Monoux College  
Greenwich College  
Sir William Burrough Primary  
Abbey Wood School  
Tower Hamlets College  
London Leisure College

Clara Grant Primary  
Orpington College  
Hotel and Tourism School  
Brooke Primary  
Alperton School  
Essex Primary

## Competition Corner

### WIN TWO FREE RETURN TICKETS TO AMSTERDAM

flying from London City Airport

To enter, all you need to do is answer the question below. Complete your details and post this form to Rohima Begum, London City Airport, City Aviation House, Royal Docks, London, E16 2PB, or hand your completed form in at the Information Desk in the Airport Terminal.

**On which of the Royal Docks did the Poplar Regatta 2008 take place?**

- a. Royal Victoria Dock
- b. Royal Albert Dock
- c. King George V Dock

Name:

Address:

Contact daytime phone number:

Question answer:

Competition is not open to employees at London City Airport. Competition closes 31 July 2008. Flights must be taken by 1 February 2009.

## Prize Winner

Last edition's competition winner was Yvonne Hepburn from Thamesmead who won two return tickets to Geneva.



Yvonne with Rohima at LCA

## Airport Contacts

**London City Airport**  
Royal Docks  
London City Airport E16 2PB

**Community Relations**  
Elizabeth Hegarty  
Phone: 0207 646 0042  
Email: [elizabeth@lcy.co.uk](mailto:elizabeth@lcy.co.uk)

Rohima Begum  
020 7646 0041  
[rohima.begum@lcy.co.uk](mailto:rohima.begum@lcy.co.uk)

**Long Term Strategy**  
Janet Goulton  
Phone: 0207 646 0530  
Email: [janet@lcy.co.uk](mailto:janet@lcy.co.uk)

**Environment and Planning**  
Rob Grafton  
Phone: 0207 646 0200  
Email: [rob@lcy.co.uk](mailto:rob@lcy.co.uk)

Dan Townsend  
020 7646 0180  
[dan.townsend@lcy.co.uk](mailto:dan.townsend@lcy.co.uk)

**Recruitment**  
Reed Employment  
Phone: 0207 517 3594

